

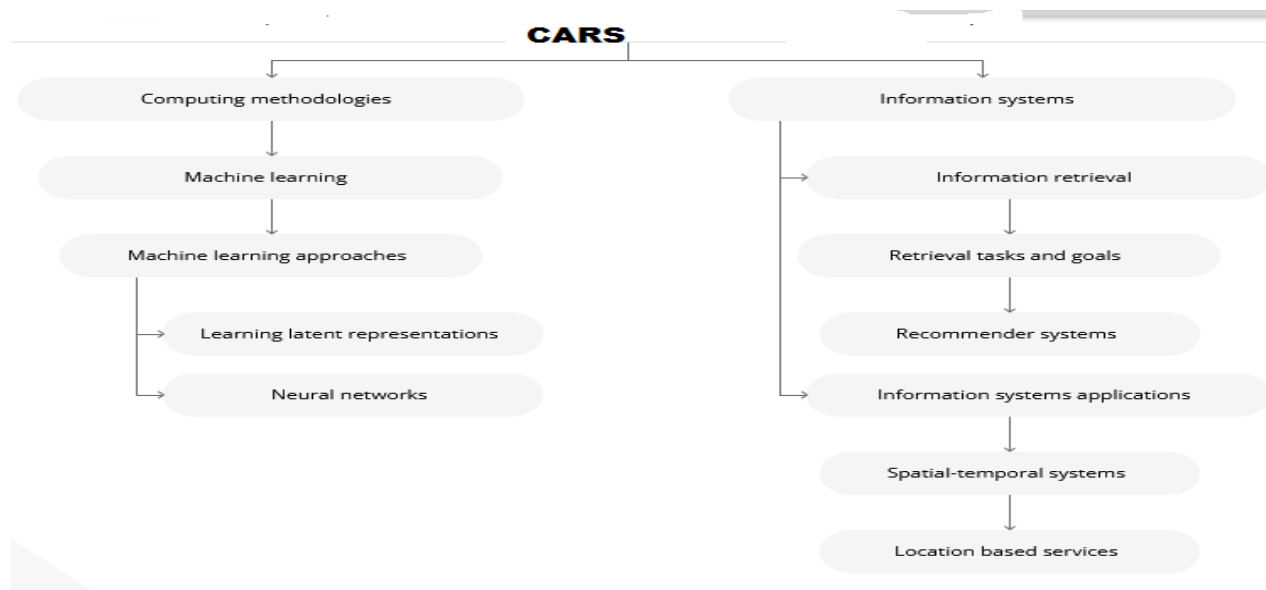


**Dr. B. VANATHI**  
**Ph.D, Anna University**  
**Professor, Computer Science and Engineering**  
**Phone: 044 – 27454784/8124**  
**Email: vanathib.cse@srmvalliammai.ac.in**



## Areas of Research

- **Context Aware Computing** – Context-Aware Recommender Systems (CARS)
- **Ontology** - An ontology-based context model in intelligent environments
- **Machine Learning, Deep Learning** – Hand Written Recognition, Medical Image Analysis
- **Image processing** – Object Recognition and Detection
- **Cyber Security** – Vulnerability Assessment





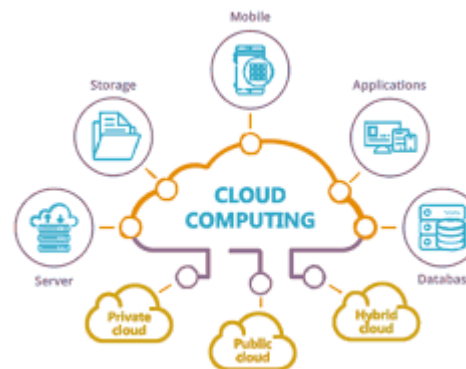
**Dr. V. Dhanakoti**  
**B.E., M.E., PhD.,**  
**Professor, Computer Science and Engineering**

044 – 27454784 / 726, 27451498, 9444138976  
dhanakotiv.cse@srmvalliammai.ac.in



## Areas of Research

- **Network Security** : Security, Routing, Cryptography, IDS, IPS and Firewalls
- **Cloud Computing** : Cloud Security, Cloud Scalability
- **Big Data** : Data Science, Prediction Algorithms, Transaction processing systems, Customer databases, Social networks and Data optimization





**Dr. A. Samydurai**

**B.E., M.E., PhD.,**

**Professor, Computer Science and Engineering**

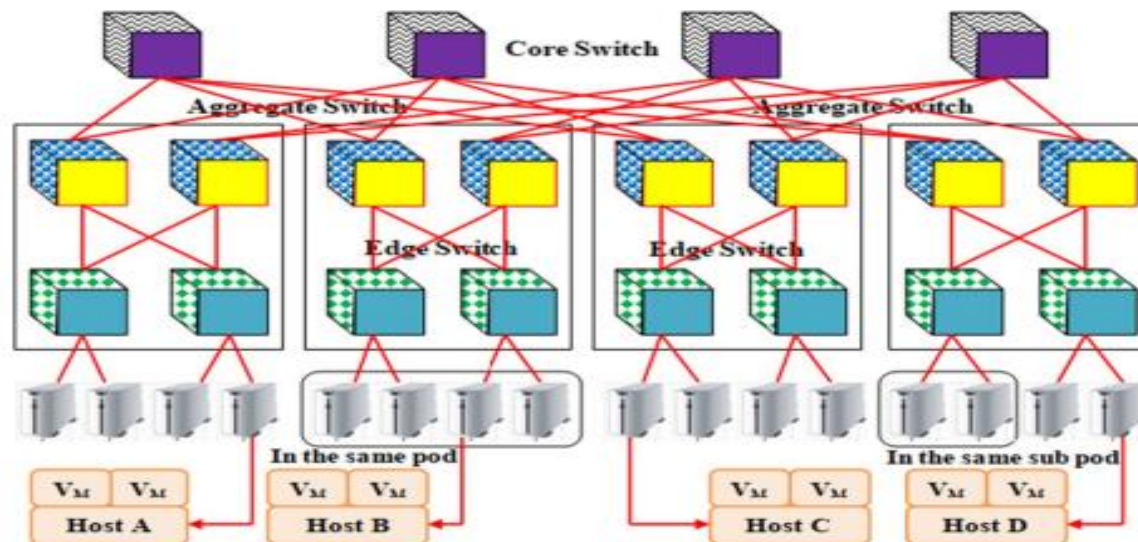
044 - 27454784 / 726, 27451498

samyduraia.cse@srmvalliammai.ac.in



## Areas of Research

- **Fault Tolerance** - Physical machine, Virtual machine
- **Internet of Things** - Data science, feature selection, healthcare monitoring
- **Cloud Computing** - Non-Relational database, document-oriented database
- **Deep Learning** - Convolutional Neural Networks, DCNN



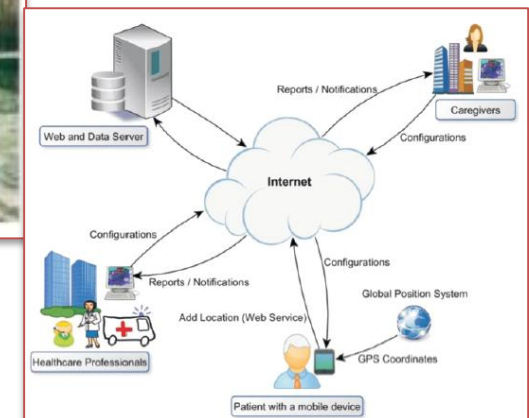
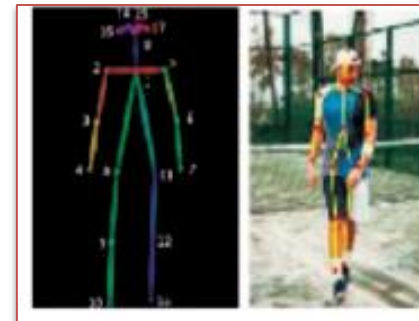
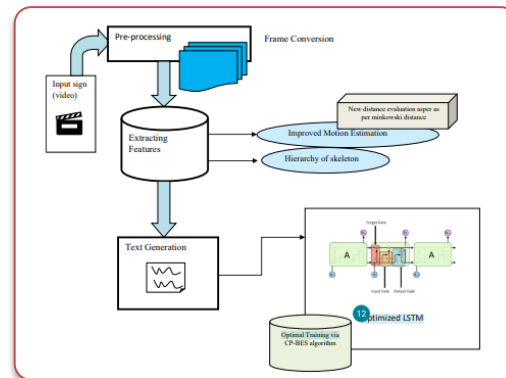


**Dr. B. Muthusenthil**  
**B.E, M.E, PhD, PDF(South Korea) India**  
**Professor, Computer Science and Engineering**  
044 - 27454784 / 726, 27451498  
muthusenthilb.cse@srmvalliammai.ac.in



## Areas of Research

- **Medical Applications** - Alzheimer Patients analysis, Stress analysis, Fitness Analysis
- **Internet of Things** - Autonomous Robots ,Wearable Sensors, Data optimization, IoT in surveillance
- **Wireless Sensor Networks** - Network Security, Secure Geographical Routing, Privacy Preservation, Light weight cryptography
- **Video Security** - Image data hiding, Zero Steganography, Sign Language Video to Text Conversion



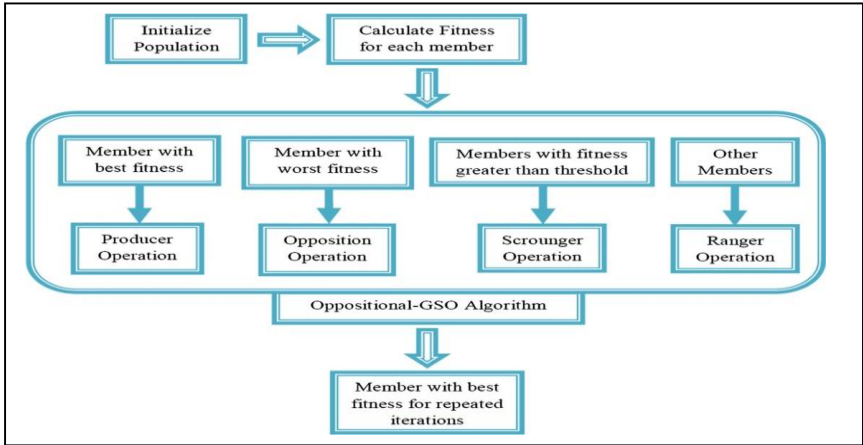
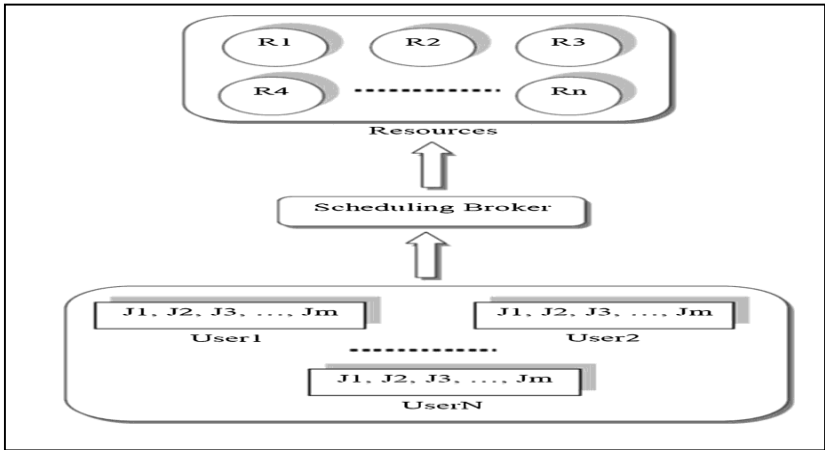


**Dr. S. PARTHASARATHY,**  
**M.C.A., B.Ed., M.Phil., M.Tech., M.B.A., Ph.D.,**  
**Associate Professor, Computer Science and Engineering**  
044 - 27454784 / 726, 27451498  
[parthasarathys.cse@srmvalliammai.ac.in](mailto:parthasarathys.cse@srmvalliammai.ac.in)



## Areas of Research

- **Scheduling algorithm using heuristic search methods in cloud computing environment - Group Search Optimization (OGSO)**
- **Enhancement of Group Search Optimizer - Oppositional GSO Algorithm**
- **Improve adoption and ` rate in international business - Information Technology System Implementation**
- **Waste Management Process - Artificial Intelligence Techniques**
- **Global Warming - ICT based solution**
- **Chimp optimization algorithm - IoT based solution**
- **Overload detection - Virtual machine migration**





**Dr. S.K.SARAVANAN**  
**MCA.,M.Tech.,PhD.**  
**Assistant Professor(Sel.G), Computer Science  
and Engineering**  
044 - 27454784 / 726, 27451498  
saravanank.cse@srmvalliammai.ac.in



## Areas of Research

- **Machine Learning** - Hand Written Recognition, Medical Image analysis
- **Data Mining and Data Analytics**- Credit Card Fraud Detection, Secured Online Transaction
- **Mobile Commerce**- Security in mobile commerce
- **Cloud Computing** - Security aspects in Cloud



**Ms.G.Sangeetha**  
**B.E, M.E, (Ph.D) India**  
**Professor, Computer Science and Engineering**  
044 - 27454784 / 726, 27451498  
sangeethag.cse@srmvalliammai.ac.in



## Areas of Research

- **Big data Analytics -Disease prediction , Recommendation System, Smart Cites, Web Server Log Analysis**
- **Medical Applications - medical data analysis , image processing**
- **Internet of Things -Wearable Sensors, IoT in surveillance**
- **Cloud Computing - Storage , Scheduling ,load balancing in cloud.**
- **Machine learning - Sales prediction, Sentiment Analysis**





# Dr. M. MAYURANATHAN

**B.E., M.Tech., Ph.D., India.**

**Assistant Professor (Sel. Gr.), Computer Science and Engineering**

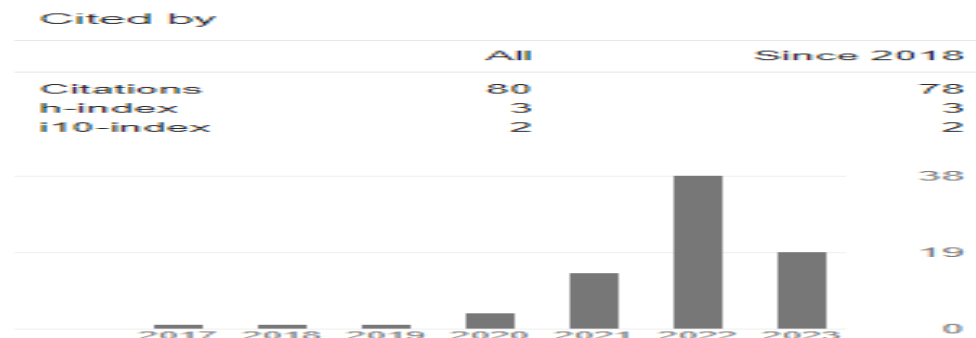
044 - 27454784 / 8248197427

mayuranathanm.cse@srmvalliammai.ac.in



## Areas of Research

- **Cloud Security**- Methods to mitigate all the attacks in cloud, IDS, IPS and vulnerability in cloud.
- **Internet of Things** - Autonomous Robots, Wearable Sensors, Data optimization, IoT in surveillance.
- **Block Chain** - Security for proper data transfer, short time data transfer and preservation of data over cloud.
- **Video Security** - Image data hiding, Zero Steganography, Sign Language Video to Text Conversion.
- **Image Processing** - Recognition of objects over video streaming, Prevention of insecure events.





# Mr. V. Santhana Marichamy

M.C.A, M.E, (Ph.D)

Assistant Professor, Computer Science and Engineering

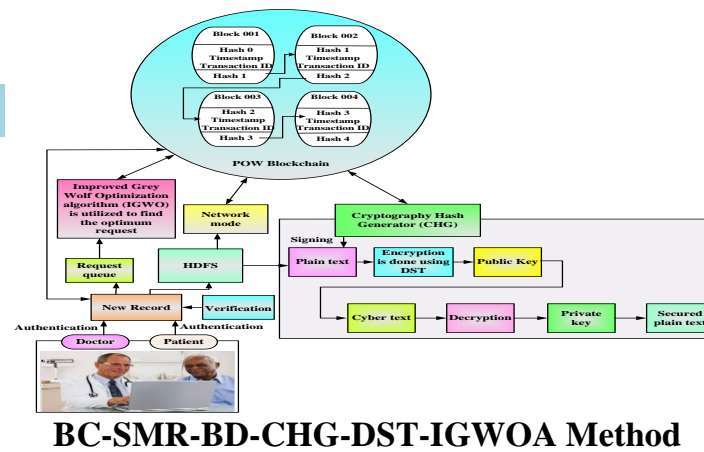
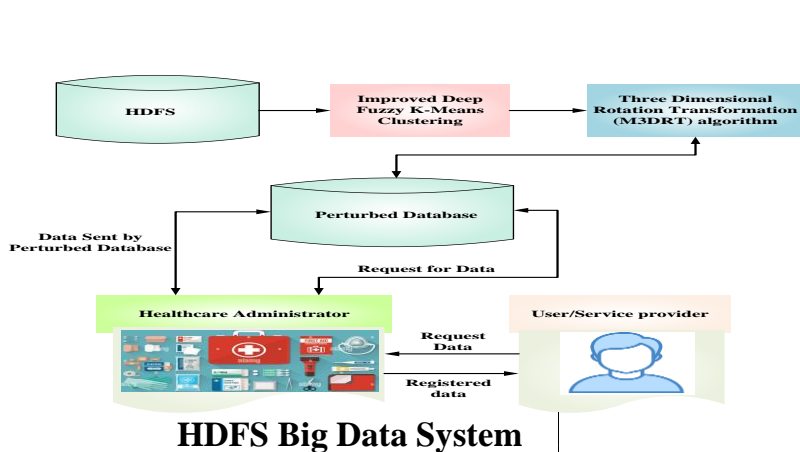
044 - 27454784 / 726, 27451498  
 santhanav.cse@srmvalliammai.ac.in



## Areas of Research

- **Big Data** - HDFS, IDFKM-M3DRT method, Improved deep fuzzy k-means clustering
- **Data Security** - Analysis of Security level, Analysis of Efficiency, Precision, Privacy Preservation

**Blockchain** - Discrete Shearlet Transform (DST) for encryption, Crypto Hash Signature Token for Securing Medical Records in Blockchain





**Dr. G. Kumartesan**

**B.E, M.E, PhD**

**Assistant Professor, Computer Science and Engineering**

044 - 27454784 / 726, 27451498



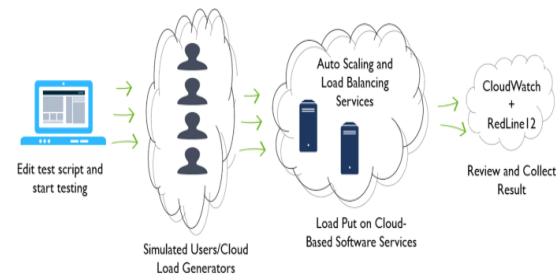
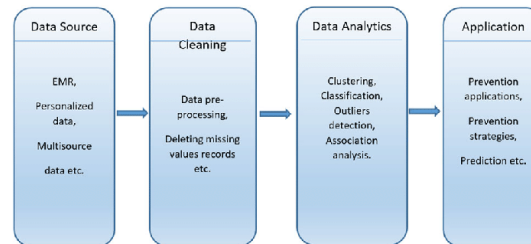
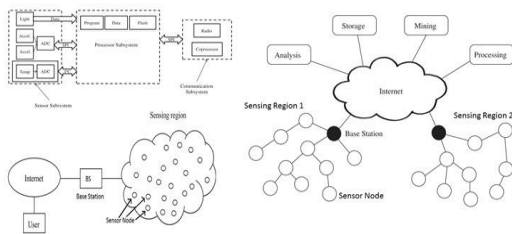
## Areas of Research

- **Internet of Things** - Wearable Sensors, Data optimization, IoT surveillance
- **Wireless Sensor Networks** - Security, Routing, Privacy Preservation
- **Medical Applications** - Patient disease analysis, Fitness Analysis
- **Cloud Computing** - Cloud Security, Cloud Scalability

## WIRELESS SENSOR NETWORKS

**(WSN)**

ELECTRONICS #03



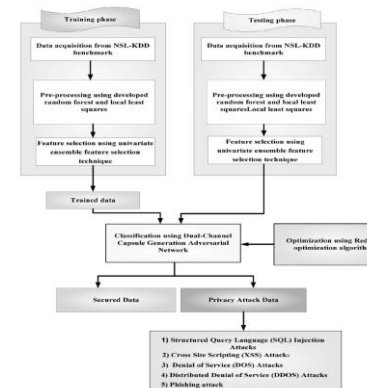
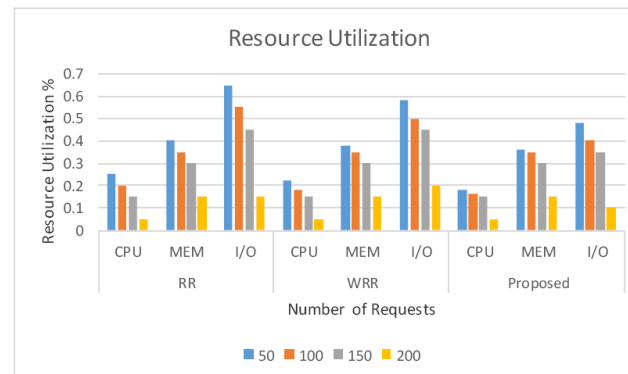
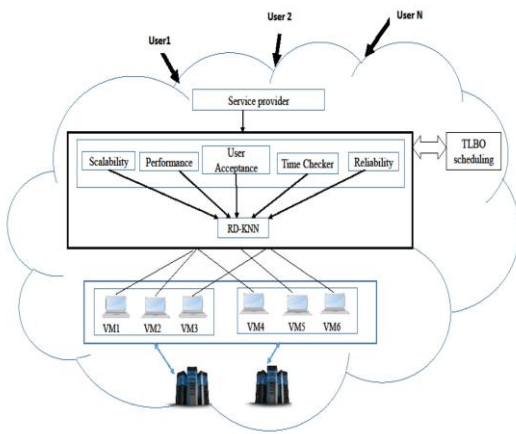


**Dr. K. Devi**  
**Ph.D, Anna University**  
**Assistant Professor, Computer Science and Engineering**  
**Phone: 044 – 27454784/8124**  
**Email: devik.cse@srmvalliammai.ac.in**



## Areas of Research

- **Cloud Fault Tolerance** – Proactive Fault tolerance, Reactive fault tolerance,
- **Cloud Scheduling Algorithm**-Static scheduling and Dynamic scheduling
- **Cloud Security**- Network Security, Privacy Preservation, cryptography
- **Machine Learning Algorithm** –Decision making, VM Status prediction.
- **Intrusion Detection**-Privacy attack Detection in Cloud Environment





**Ms.A.LALITHA**  
**B.E, M.E, India**  
**Assistant Professor**  
**Computer Science and Engineering**  
044 - 27454784 / 726, 27451498  
vidhyaa.cse@srmvalliammai.ac.in



## Areas of Research

- **Deep Learning-Convolution Neural Network, Recurrent Neural Network**  
Deep learning is the branch of machine learning which is based on artificial neural network architecture. An artificial neural network or ANN uses layers of interconnected nodes called neurons that work together to process and learn from the input data.

## Internet of Things

- **Virtual reality**-computer-based virtual experience in which you can control some characters or activities within the software
- **Cloud Computing**-RSA Algorithm named after its inventers (Rivest, Shamir, and Adelman) is best suited for data traveling to/from Web and Cloud based environments. In working with Cloud Computing, the end user data is first encrypted and then stored on the Cloud



**Ms. Shanthi S**  
**B.E, M.E, (Ph.D) India**  
**Assistant Professor, Computer Science and**  
**Engineering**  
044 - 27454784 / 726, 27451498



Research Area:

- ❖ Deep Learning-Convolution Neural Network, Recognition of behavior
- ❖ CNN-Image classification , Recognition of behavior
- ❖ Medical Applications – image processing, medical image classification, Generation of images
- ❖ Internet of Things –Wearable Sensors, IoT in surveillance ,Smart Decision
- ❖ Cloud Computing – cloud data Storage , Cloud Security, Cloud Scalability
- ❖ Machine learning – Image-Based Applications, Reinforcement learning, K nearest neighbor. Decision tree. Support Vector Machines, Naive Bayes
- ❖ Computer vision -image segmentation ,object detection



**Ms.Suma.S**

**B.E, M.E India**

**Asst Professor, Computer Science and  
Engineering**

044 - 27454784 / 726, 27451498

sumas.cse@srmvalliammai.ac.in



## Areas of Research

- Cloud Computing - Green Cloud, Cloud cryptography, Scheduling, Load balancing in cloud.
- Big data Analytics -Predictive Analytics, Fraud and Risk detection, Advertisement optimization
- Machine learning - Image based applications, Object detection with deep learning
- Artificial Intelligence and Robotics- Robot perception and learning, Autonomous vehicles

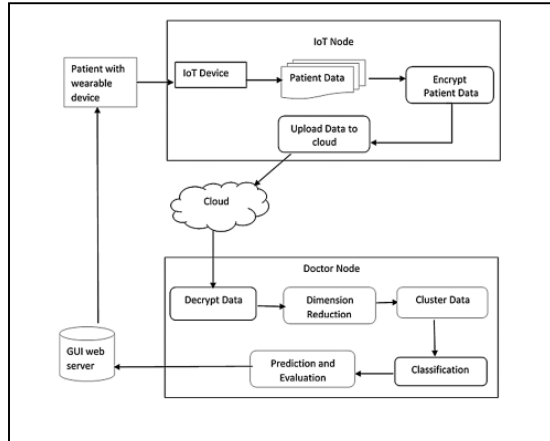
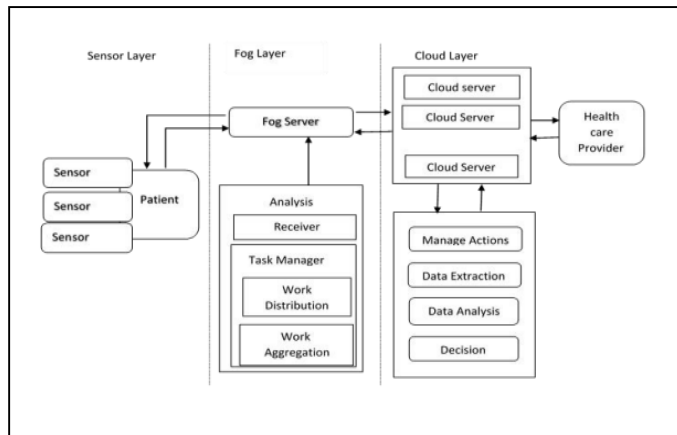


**Dr.S.BENILA M.E, PhD**  
Assistant Professor(Sr.G),  
Computer Science and Engineering  
044 - 27454784 / 726, 27451498  
benilas.cse@srmvalliammai.ac.in



## Areas of Research

- **Machine Learning, Deep Learning** - Dimension reduction, Medical Data analysis, Heart disease Prediction
- **Fog/Edge Computing** - Data processing in Fog, Data Offloading
- **Network Security-** Security in cloud and communication networks
- **Internet of Things** - smart healthcare automation, smart transportation







**Dr.C.Pabitha., B.E, M.E, Ph.D.**

**Assistant Professor, Computer Science and Engineering**

044 – 27454784 / 726, 27451498

pabithac.cse@srmvalliammai.ac.in



**Areas of Research**

- ❖ **Deep Learning:-** Image Classification, Emotion Recognition, Voice Recognition, Character Recognition, Human Pose Detection, Gesture Recognition, Medical Image Processing, Agriculture, Healthcare , Fraud Detection, Gaming.
- ❖ **Internet of Things :-** Wearable Technology, Smart Home Applications, Healthcare, Agriculture , Industrial Automation.
- ❖ **Cloud Computing:-** Business Applications, Cloud Storage and Security, Education Applications, Social network Applications.
- ❖ **Big data Analytics:-** Education sector, Energy sector, Media and Entertainment sector, Virtual Assistant, Automated Driving.
- ❖ **Natural Language Processing:-** Sentiment Analysis, Language translator, Voice Assistant.



<b>INTERNET &amp; CLOUD</b>	<b>MEDICINE &amp; BIOLOGY</b>	<b>MEDIA &amp; ENTERTAINMENT</b>	<b>SECURITY &amp; DEFENSE</b>	<b>AUTONOMOUS MACHINES</b>
Image Classification Speech Recognition Language Translation Language Processing Sentiment Analysis Recommendation	Cancer Cell Detection Diabetic Grading Drug Discovery	Video Captioning Video Search Real Time Translation	Face Detection Video Surveillance Satellite Imagery	Pedestrian Detection Lane Tracking Recognize Traffic Sign



**Mr. N. LEO BRIGHT TENNISSON**  
**M.C.A., M.TECH., SET, NET**  
**Assistant Professor (Sr. G),**  
**Computer Science and Engineering**  
044 - 27454784 / 726, 27451498  
[leobrighttennisonn.cse@srmvalliammai.ac.in](mailto:leobrighttennisonn.cse@srmvalliammai.ac.in)



## Area of Research

- **Machine Learning/Deep Learning-** Data classification and prediction.
- **Geographic Information System-** Analysis of structures, rocks, etc....
- **Internet of Things-** Capture, transmission of GIS data.
- **Image processing-** Processing of GIS images



**Dr.S.Venkatesh**  
**B.TECH, M.E, Ph.D ,India**  
**Professor, Computer Science and Engineering**  
044 - 27454784 / 726, 27451498  
venkateshs.cse@srmvalliammai.ac.in



## Areas of Research

- Wireless Sensor Networks- Lifetime improvement, energy efficiency, load efficiency, quality detection improvement.
- Artificial intelligence- Technologies for product improvement and its lifecycle management.
- Internet of Things -IoT in surveillance, smart city development, smart vehicles.
- Machine learning - Clustering, Regression , supervised learning, models
- Blockchain technologies- Distribution, tokenization, decentralization.



**Ms.A.Vidhya**  
**B.E, M.E, (Ph.D) India**  
**Assistant Professor**  
**Computer Science and Engineering**  
044 - 27454784 / 726, 27451498  
[vidhyaa.cse@srmvalliammai.ac.in](mailto:vidhyaa.cse@srmvalliammai.ac.in)



## Areas of Research

- Deep Learning-Convolution Neural Network, Recurrent Neural Network
- Medical Applications - Medical image analysis , Image processing
- Internet of Things -**IoMT**



**Ms.V.Prema**  
**B.E, M.E, India**  
**Assistant Professor**  
**Computer Science and Engineering**  
044 - 27454784 / 726, 27451498  
vidhyaa.cse@srmvalliammai.ac.in



## Areas of Research

- Deep Learning-Convolution Neural Network, Recurrent Neural Network
- Internet of Things -**IoMT**
- **Virtual reality**-computer-based virtual experience in which you can control some characters or activities within the software
- **Cloud Computing**-RSA Algorithm named after its inventers (Rivest, Shamir, and Adelman) is best suited for data traveling to/from Web and Cloud based environments. In working with Cloud Computing, the end user data is first encrypted and then stored on the Cloud



**Mr.T.RAJASEKARAN**  
**B.E., M.Tech., (PhD)**  
**Assistant Professor (Sr.G), Computer Science  
and Engineering**  
044 - 27454784 / 726, 27451498  
rajasekarant.cse@srmvalliammai.ac.in



## Areas of Research

- **Blockchain** - Crypto currency, Blockchain in IoT Security, AI, Social Networks
- **Big Data Analytics** - Recommendation System, Smart Cities, Web Server Log Analysis
- **Internet of Things** - Wearable Sensors, IoT in Surveillance
- **Machine Learning, Deep Learning** - Hand Written Recognition, Medical Image analysis



**Mr. K.SHANMUGAM**

**B.E, M.E, (PhD)**

**Assistant Professor(Sr.G), Computer Science  
and Engineering**

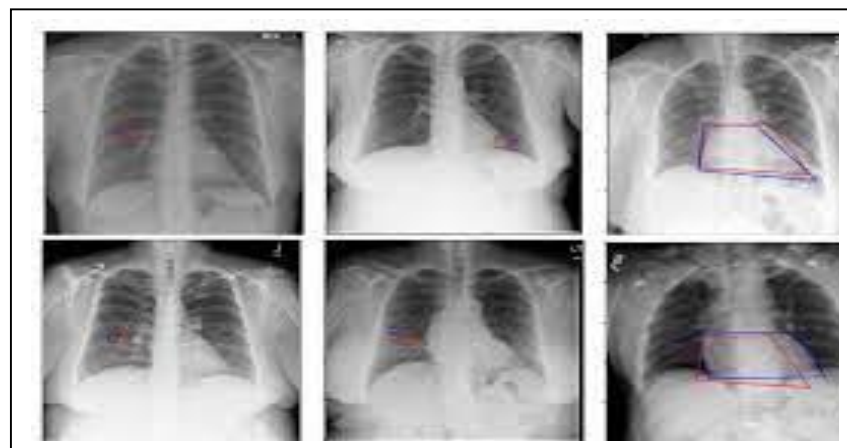
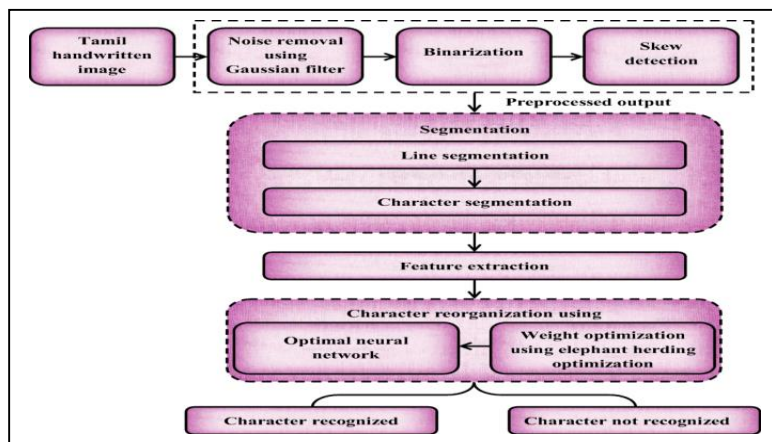
044 - 27454784 / 726, 27451498

shanmugamk.cse@srmvalliammai.ac.in



## Areas of Research

- **Machine Learning, Deep Learning** - Hand Written Recognition, Medical Image analysis
- **Image Processing** - Object Recognition and Object detection, style transfer
- **Mobile Commerce** - Security in mobile commerce
- **Tamil Computing** - POS Tagger, Morphological Analyzer and Generator, Machine Translation, Computational Linguistics
- **AR and VR in Tamil**
- **Artificial Intelligence in Tamil and Cyber Security** - Vulnerability Assesment





Ms.ANITHA R,  
B.E, M.E, (Ph.D) India,  
Assistant Professor(Sr.G),  
Computer Science and Engineering,  
044 - 27454784 / 726, 27451498  
anithar.cse@srmvalliammai.ac.in



## Area of Research

- **Blockchain Networks**- Security of Networks,Distributed Ledger,Mining....
- **Internet of Things**- Analysis of different devices,capture and connecting devices with internet....
- **Cloud Computing**- Types of clouds,Cloud infrastructure,Application of Cloud... .





**Ms. M. Priyadharshini**

**B.E,M.E, (Ph.D) India**

**Assistant Professor (O.G),**

**Computer Science and Engineering**

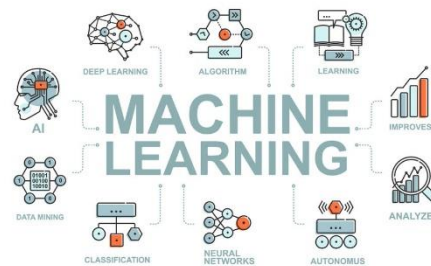
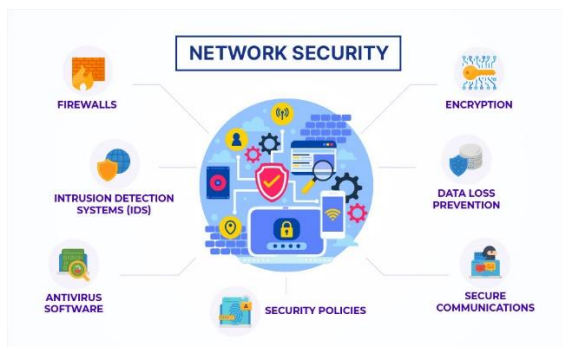
**044 - 27454784 / 8939902677**

**priyadharshinim.cse@srmvalliammai.ac.in**



## Areas of Research

- **Network Security** - Security, Routing, Cryptography, IDS, IPS and Firewalls
- **Machine Learning**- Hand Written Recognition, Medical Image analysis
- **Network Traffic Monitoring** - Detecting malware





**Ms.G.Sathya**

**B.E, M.Tech**

**Assistant Professor(O.G), Computer Science and Engineering**

9677463228

[sathyag.cse@srmvalliammai.ac.in](mailto:sathyag.cse@srmvalliammai.ac.in)

## Areas of Research

- Cyber Security- Image encryption Techniques,Decomposition Method,Scrambling Techniques
- Image Processing - Pattern Recognition,Edge detection,Segmentation
- IOT(Internet Of Things)-Security Attacks,Survey and Prevention

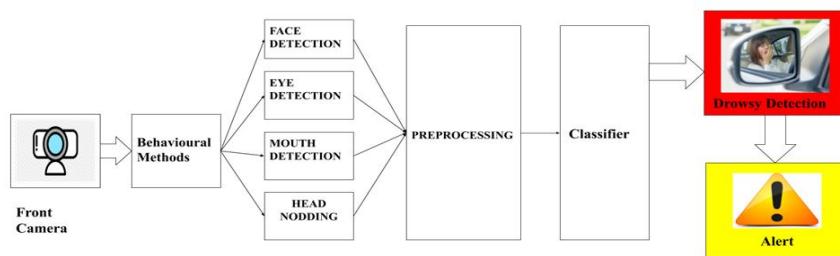


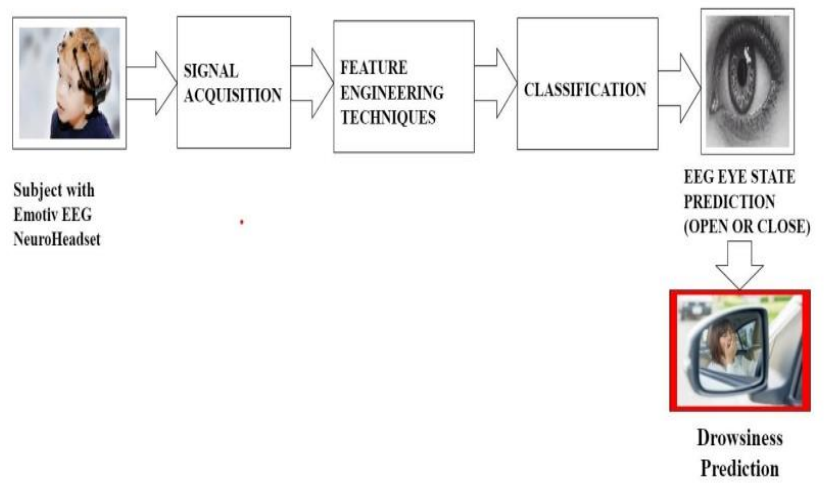
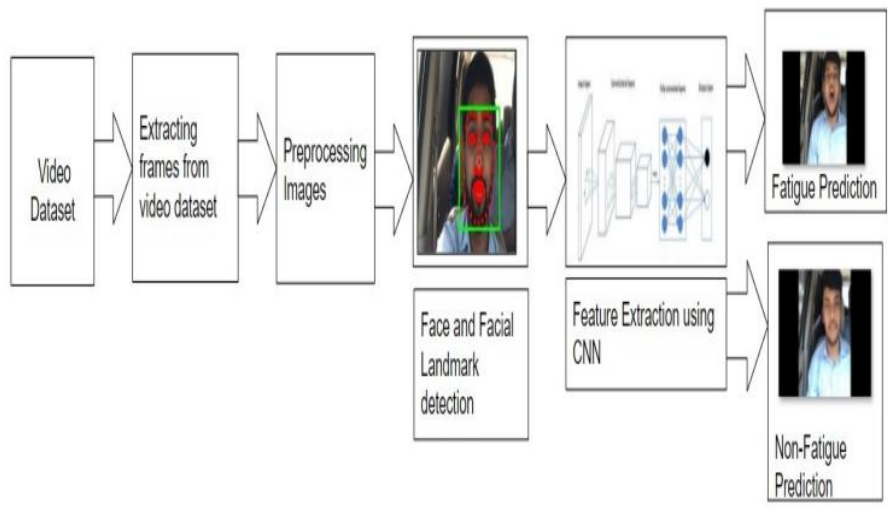
**Mrs. V.Vijay Priya**  
**B.E, M.E, (PhD)**  
**Assistant Professor (O.G), Computer Science  
and Engineering**  
044 - 27454784 / 726, 27451498  
vijaypriyav.cse@srmvalliammai.ac.in



## Areas of Research

- **Machine Learning, Deep Learning** - Image Detection, Video Analysis, Medical Image Analysis, Classification and Prediction, Emotion Detection.
- **Image Processing** - Object detection, Face detection, Different Feature Engineering techniques.
- **Augmented Reality**- In Education
- **Internet of Things**- Wearable sensors, Web Application.







**Ms. B. CHRISTINA SWEETLINE**  
**B.E, M.E, (PhD)**  
**Assistant Professor(O.G),**  
**Computer Science and Engineering**  
044 - 27454784 / 726, 27451498  
christinab.cse@srmvalliammai.ac.in



## Areas of Research

- Big Data Analytics
- Machine Learning
- Deep Learning
- Medical Image Processing

