

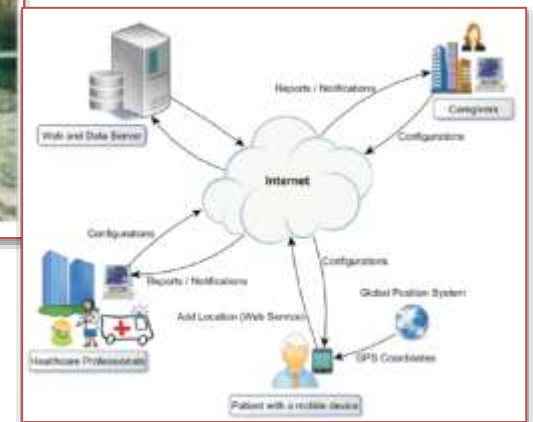
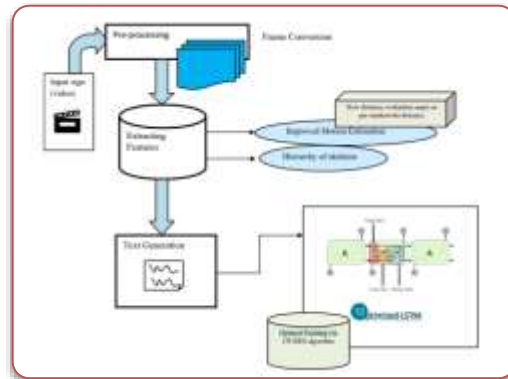


Dr. S.Narayanan
B.E, M.Tech, PhD,
Associate Professor, Information Technology
044 - 27454784 / 726, 27451498
narayanans.it@srmvalliammai.ac.in



Areas of Research

- **Data Analysis** - Regression, Classification
- **Internet of Things** - Wearable Sensors, Data optimization, IoT in Edge and Fog Computing
- **Wireless Sensor Networks** - Network Security, Routing Protocol
- **Video Security** - Image data hiding, Zero Steganography, Sign Language Video to Text Conversion





Dr. S.Sekar, B.E, M.E, Ph.D

Assistant Professor, Information Technology

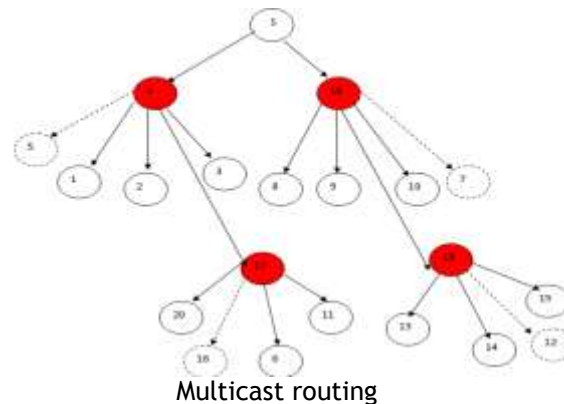
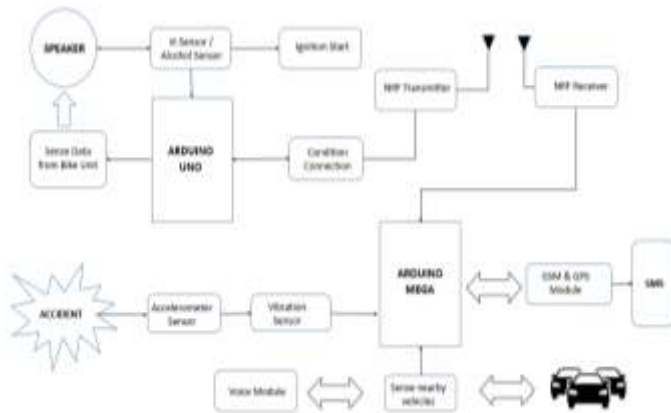
☎: 9677140043

✉: sekars.it@srmvalliammai.ac.in



Areas of Research

- **Internet of Things** -Data optimization, Smart Helmet,Smart farming,IoT in surveillance
- **Mobile Ad hoc Networks** - Secure Geographical Routing, Light weight reliable and secure multicast routing
- **AR/VR Technology** - Industry safety training simulation virtual reality,Military simulation in virtual reality, Control and monitoring of IoT devices





Mr. M. Asan Nainar M.Tech.

Assistant Professor, Information Technology

044 - 27454784 / 726, 27451498

asanm.it@srmvalliammai.ac.in



Areas of Research

- **Data Analytics** - Computational analysis, Applying data patterns, Statistics Analysis
- **UI and UX Design** - Web Design, Web Development, User Behavior
- **Networking Technology** - Network Security, Privacy Preservation, QoS
- **Artificial intelligence**- Simulation of human intelligence, Machine vision, Pattern recognition, Prediction, Support vector machines genetic algorithm





S. Shenbagavadivu

B.E, M.Tech,(Ph.D)

**Assistant Professor(Sel.G)/Department of
Information Technology**

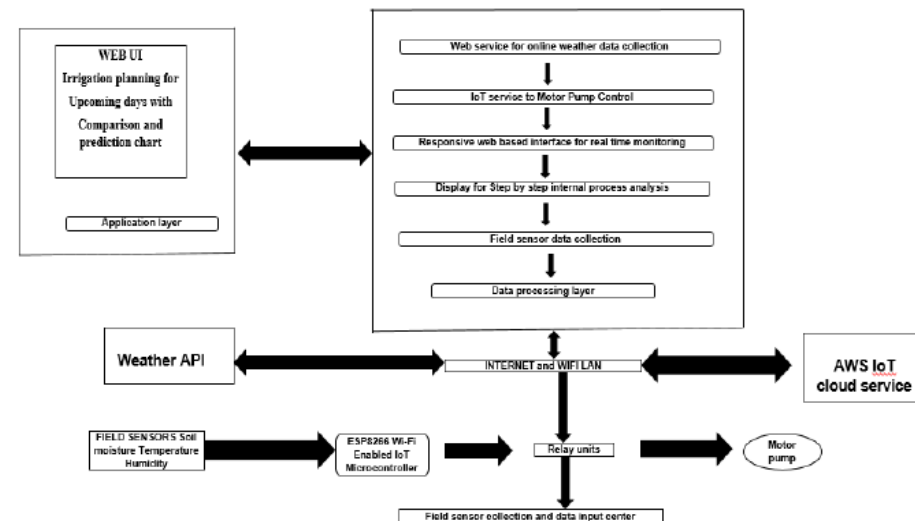
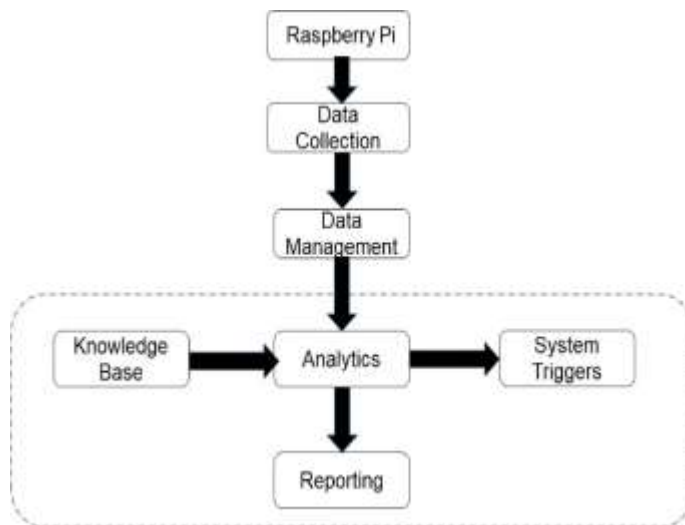
044-27454784/9952984706

shenbagavadivus.it@srmvalliammai.ac.in



Areas of Research

- **Internet of Things**—Smart Irrigation, Smart Agriculture, Smart Home, Wireless sensor network.
- **Artificial Intelligence**—Smart Interface Expansion Card Device, Chatbot for detecting suitable soil for cultivating crops (Hardware unit).
- **Data Science**— Data and information visualization, Machine learning.





Dr.D.Sridevi

M.E, Ph.D

Assistant Professor

Department of Information Technology

sridevid.it@srmvalliammai.ac.in



Area of Research

- Data Mining- Identifying Potential Customers in E-Commerce, Customer trend analysis, Market Analysis.
- Cloud computing – Virtualization, Utilization, Performance Measures, Big Data, Green Cloud Computing
- Machine Learning – Reinforcement Learning, Deep learning (DL), Natural Language Analytics



Ms.S.Sandhya
B.E, M.E, (Ph.D.)
Assistant Professor, Information Technology
044 - 27454784 / 726, 27451498
sandhyas.it@srmvalliammai.ac.in



Areas of Research

- **Medical Applications** - Medical Image Fusion, Stress analysis, Brain Tumor Diagnosis
- **Internet of Things** -Smart City, Automation
- **Data Science** -Data Visualization, Data Analysis, Data Warehouse



Ms. U. Chindiyababy

B.E., M.E., (Ph.D.),

Assistant Professor, Information Technology

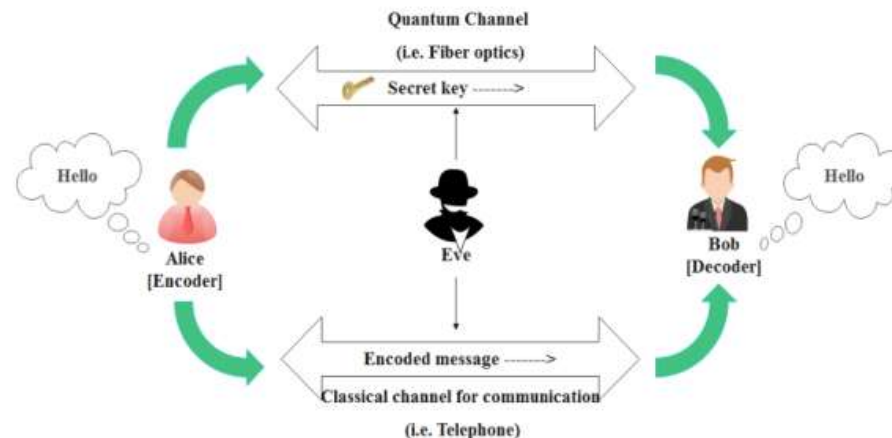
9442799169

chindiyababyu.it@srmvalliammai.ac.in



Areas of Research

- **Quantum Computing** - Quantum Communication, Quantum Key Distribution.
- **Internet of Things** - IoT Security and Privacy, Wearable Sensors, Data optimization, IoT Data Analytics and Machine Learning.
- **Wireless Sensor Networks** - Network Security, Secure Routing, Energy Optimization, Light weight cryptography, Localization and Tracking, Data Aggregation and Fusion.



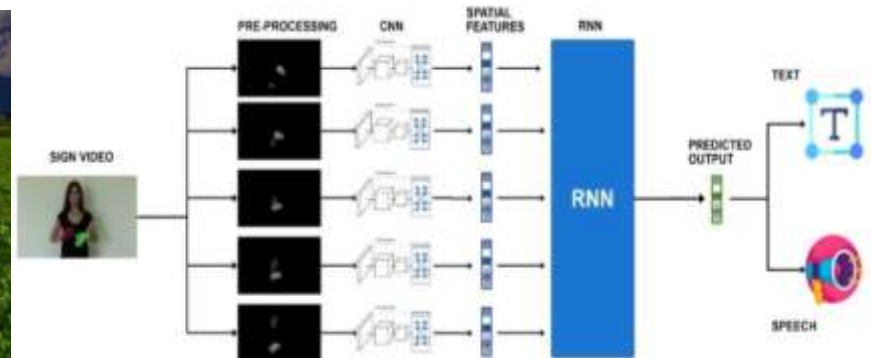
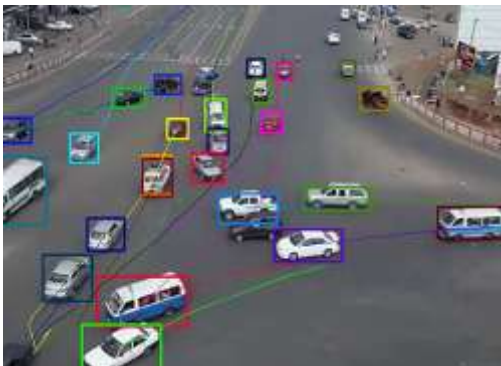


Mr.S.Ashok Kumar M.E.,
Assistant Professor, Information Technology
☎:9003769097 ✉:ashokkumars.it@srmvalliammai.ac.in



Areas of Research

- **Artificial Intelligence** - Machine Learning, Deep Neural networks, Generative Adversarial Network(GAN), Handwriting recognition, automatic image caption using deep learning, Sign Language Video to Text Conversion using transfer learning
- **Internet of Things** - Data storage in cloud, IoT in Smart farming, Wearable Sensors, transportation, smart home, Big data analytics, disabled people
- **Computer Vision** - Video tracking, Pedestrian detection, Augmented reality, Optical character recognition
- **Data Science and Analytics** - Mathematical, statistical and graphical methods for exploring complex data sets. Methods include statistical pattern recognition, multivariate data analysis, classifiers





Ms. A. Shimona Shali B.E, M.E

**Assistant Professor(O.G),
Information Technology**

044 - 27454784 / 726, 27451498
shimonashali@srmvalliammai.ac.in



Areas of Interest

- **Artificial Intelligence** -Object Detection and capturing,search and Information Retrieval
- **Internet of Things** - Privacy and Trust issues,Block chain
- **Computer Vision and Augmented Reality** – Augmented reality,3D image recognition and tracking



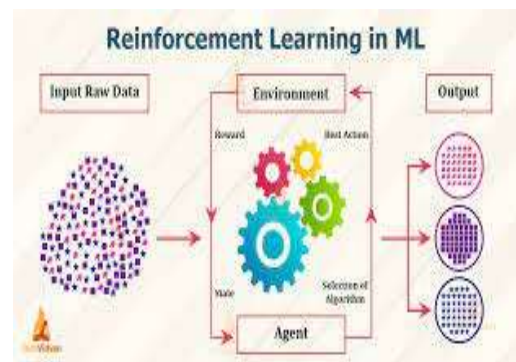
S.KIRUTHIKA B.E,M.Tech

Assistant Professor

Kiruthikas.it@srmvalliammai.ac.in

Area of Research

- **Network Security**– Block Chain Technology, Public Key Cryptography, Symmetric key cryptography.
- **Artificial Intelligence** – Artificial neural networks, Natural language processing, Deep learning.
- **Machine Learning** – Text Categories, Reinforcement learning,





MR. A. ASWIN JEBA MAHIR B.E, M.E, M.B.A, B.Ed.

ASSISTANT PROFESSOR, INFORMATION TECHNOLOGY

☎: 7299695696 ✉: aswinjebamahir.it@srmvalliammai.ac.in



AREAS OF RESEARCH

IN ENGINEERING:

DATA ANALYTICS: SECURITY IN INTERNET / WEB SEARCH, RISK MANAGEMENT, FRAUD DETECTION.

BLOCK CHAIN: NON-FUNGIBLE TOKENS, ASSET ADMINISTRATION, MEDIA SECURITY.

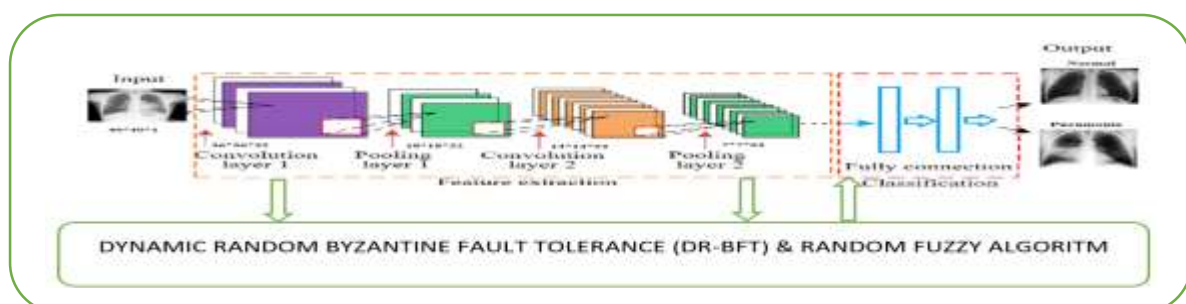
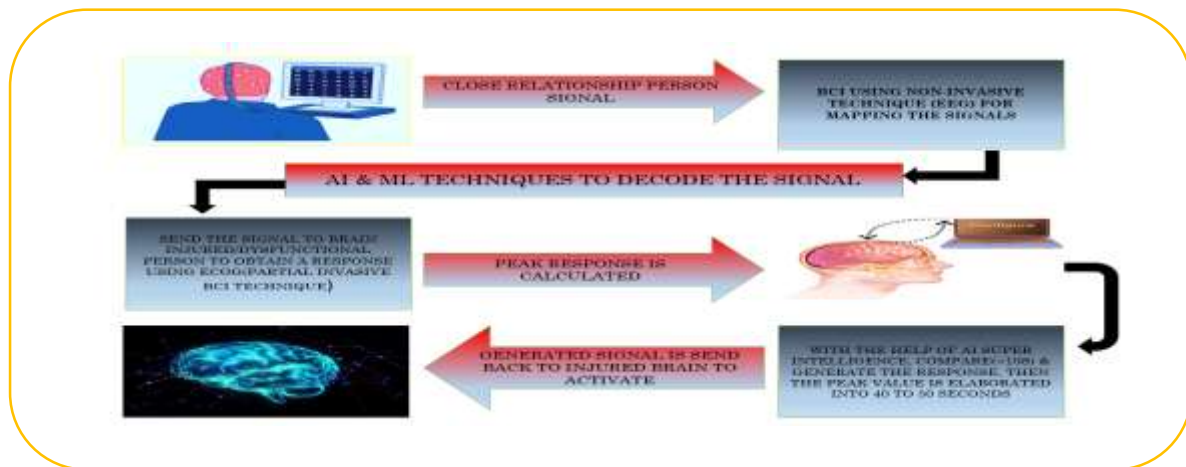
MEDICAL APPLICATIONS: BRAIN COMPUTER INTERFACE, ELECTROCORTICOGRAPHY, COMA/ARTISTIC PATIENTS ANALYSIS.

IN ADMINISTRATION:

HUMAN ETHICAL VALUES IN MANAGEMENT, MANAGEMENT SYSTEM VALUES.

IN EDUCATION:

MEASUREMENT OF COGNITIVE ANALYSIS TOWARDS ENGINEERS.





G.KARTHIKA PRIYA DHARSHINI,M.E.,

Assistant Professor
Karthikapriyag.it@srmvalliammai.ac.in

Area of Research

- **Cloud computing**–automation,Internet of Things, virtualization
- **Artificial Intelligence** –Deep Learning, Artificial neural networks, computer vision
- **Machine Learning** –Reinforcement Learning, Linear regression, support vector machine, types and algorithm of machine learning

