

Dr. Usha Bhanu. N

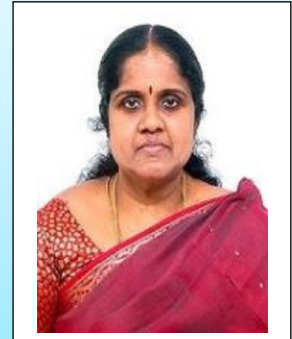
B.E, M.E, Ph.D.

Professor & Head - Medical Electronics

Department of Electronics & Communication Engineering

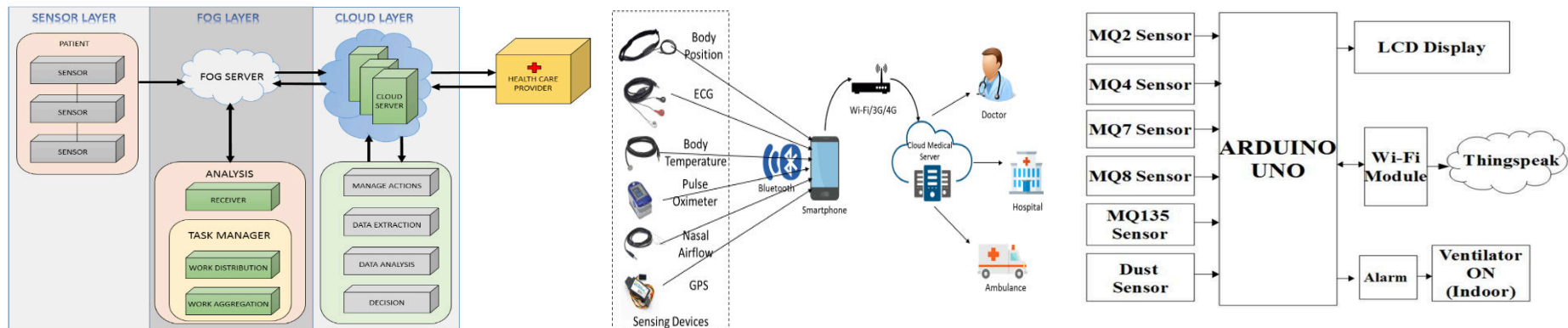
044 - 27454784 / 726, 27451498

ushabhanun.ece@srmvalliammai.ac.in



Areas of Research

- **VLSI Design** - High-speed and Low Power multimedia applications
- **Internet of Things** - Smart Agriculture, Smart Health care and Women Safety
- **Cloud Computing** - Scheduling, Data Analytics, Fog & Edge Computing
- **Embedded Applications** - Air Pollution System, Attendance & Patient Monitoring System
- **Signal & Image Processing** - Signal / Image Compression using MATLAB
- **Machine Learning** - FFT and Medical applications.





Dr. J. Mohan B.E, M.E, PhD.
Professor, Electronics and Communication Engineering
(Bio-Medical)

PH No: 09840791532

Mail ID: Mohanj.ece@srmvalliammai.ac.in,
 jaimohan12@gmail.com



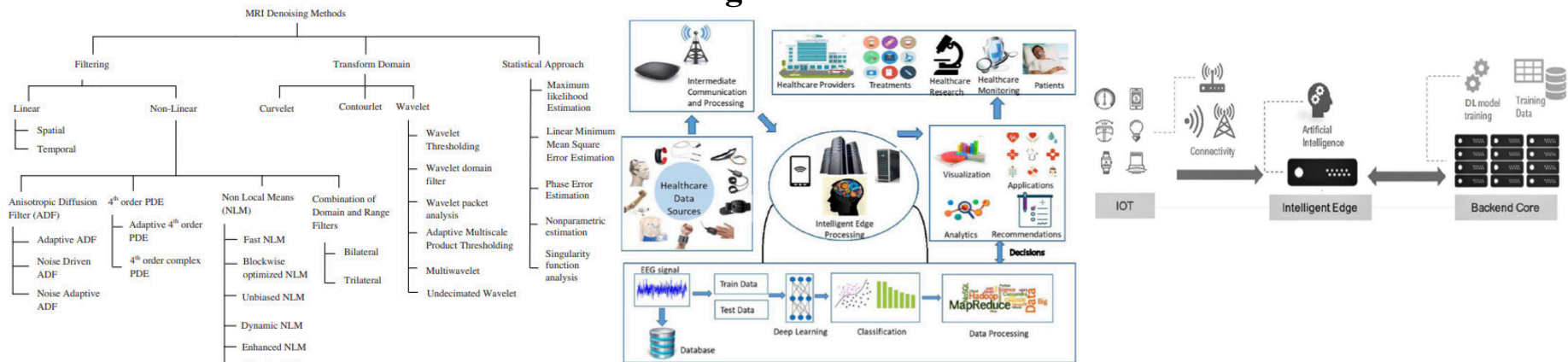
Areas of Research

MRI Image De-noising - Filtering, Transformations, Statistical methods...

Machine Learning method - Nearest Neighbors, Decision Tree, Naïve Bay, Logistic regression (MRI, Medical Dataset)...

MRI Image analysis - Unsupervised Learning, supervised Learning, CNN, Alex net, Dense Net, VGG16...

IoT-Based Healthcare Systems - Edge Computing Model, Fog Computing, Diagnosis and Treatment, Disease Management...





Ms. V.P. Sandhya

B.E, M.E, India

**Assistant Professor, Department of Medical
Electronics**

044 - 27454784 / 726, 27451498

sandhyavp.eie@srmvalliammai.ac.in



Areas of Research

- **Medical Applications** - Cardiac analysis, cancer prediction analysis.
- **Wireless Sensor Networks** - Network on-chip, performance analysis in WSN.
- **Data Analytics** - Smart healthcare systems using big data.
- **Power Electronics** - Modelling of power switches, power converters.



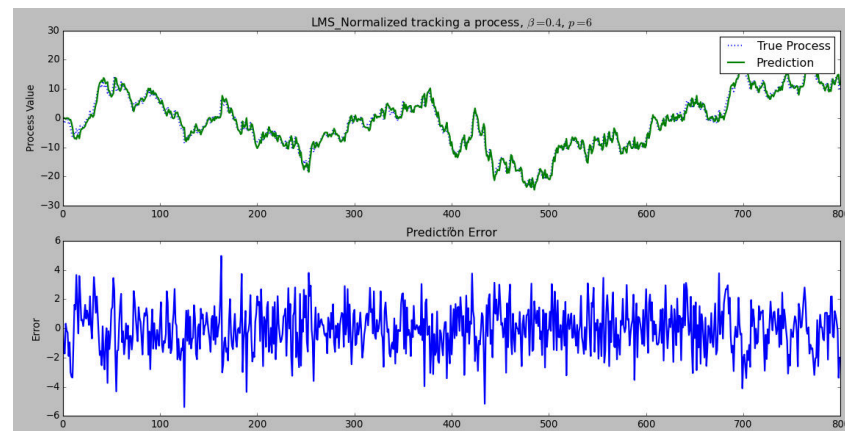
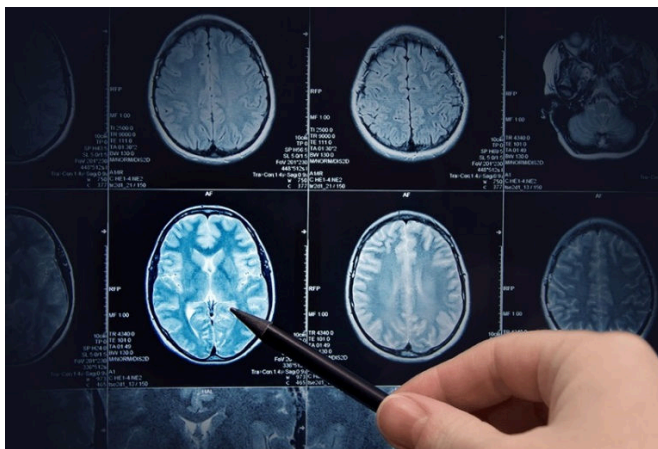
Mr. M.Selvaraj
B.E, M.E, (PhD)
**Assistant Professor, Department of Medical
Electronics**

044 - 27454784 / 726, 27451498
selvarajm.ece@srmvalliammai.ac.in



Areas of Research

- **Image Processing** - Image Analysis, Segmentation, Compression
- **VLSI Design** - Layout Design
- **Signal Processing** - Adaptive filter design, Medical Signal Analysis





Mr. Satheeswaran.C B.E, M.E, (PhD)

**Assistant Professor,
Department of Medical Electronics**

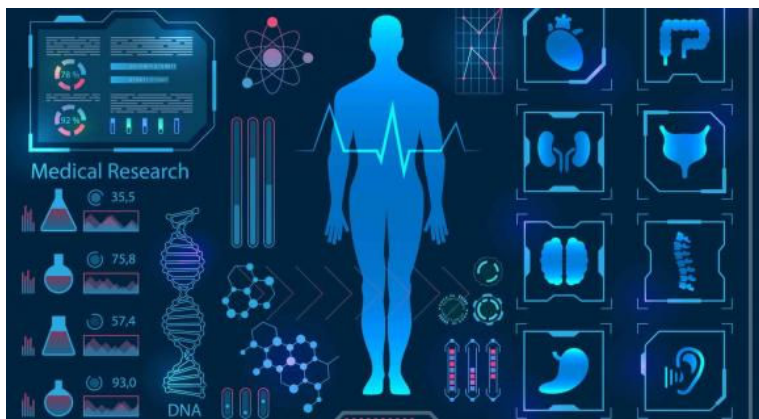
9789077813

Satheeswaranc.ece@srmvalliammai.ac.in



Areas of Research

- **Signal Processing** - Signal Processing, Medical Signal Analysis
- **Image Processing** - Image Analysis, Segmentation, Compression
- **Medical Informatics** - E health Applications
- **Internet of Things** - Smart Health Care Systems, Smart Agriculture,





Mrs. V. Venmathi

B.E., M.E., (Ph.D)

Assistant Professor, Medical Electronics

9944286712

venmathiv.med@srmvalliammai.ac.in



Area of interest

- **Optical Communication** - Equalizer Design, IFOF Design

